



Capitol Hill Conversion Project



ANC 6B Community Meeting

October 9, 2018



Capitol Hill Conversion Project Overview

- To support the changing and growing future energy needs of families and businesses we serve in the Capitol Hill community, we are upgrading underground equipment that will help increase the amount of electricity we can deliver to our customers.
- We will be increasing the capacity of our underground distribution lines. This includes transitioning from the current lower voltage underground cable system to one with higher voltage and greater electrical capacity as well as more modern circuit configuration.
- This project involves multiple components:
 - Part 1 – Feeder Extension from Benning Road to Hill East (2018)
 - Part 2 – E Street feeder extension (2018 - 2019)
 - Part 3 – LVAC extension to expand network capacity in the Pennsylvania Ave corridor (2018 through 2019)
 - Part 4 – Feeder conversion south of Pennsylvania Avenue SE (2019 – 2022)
 - Part 5 – Feeder conversion north of Pennsylvania Avenue SE (2019 – 2022)

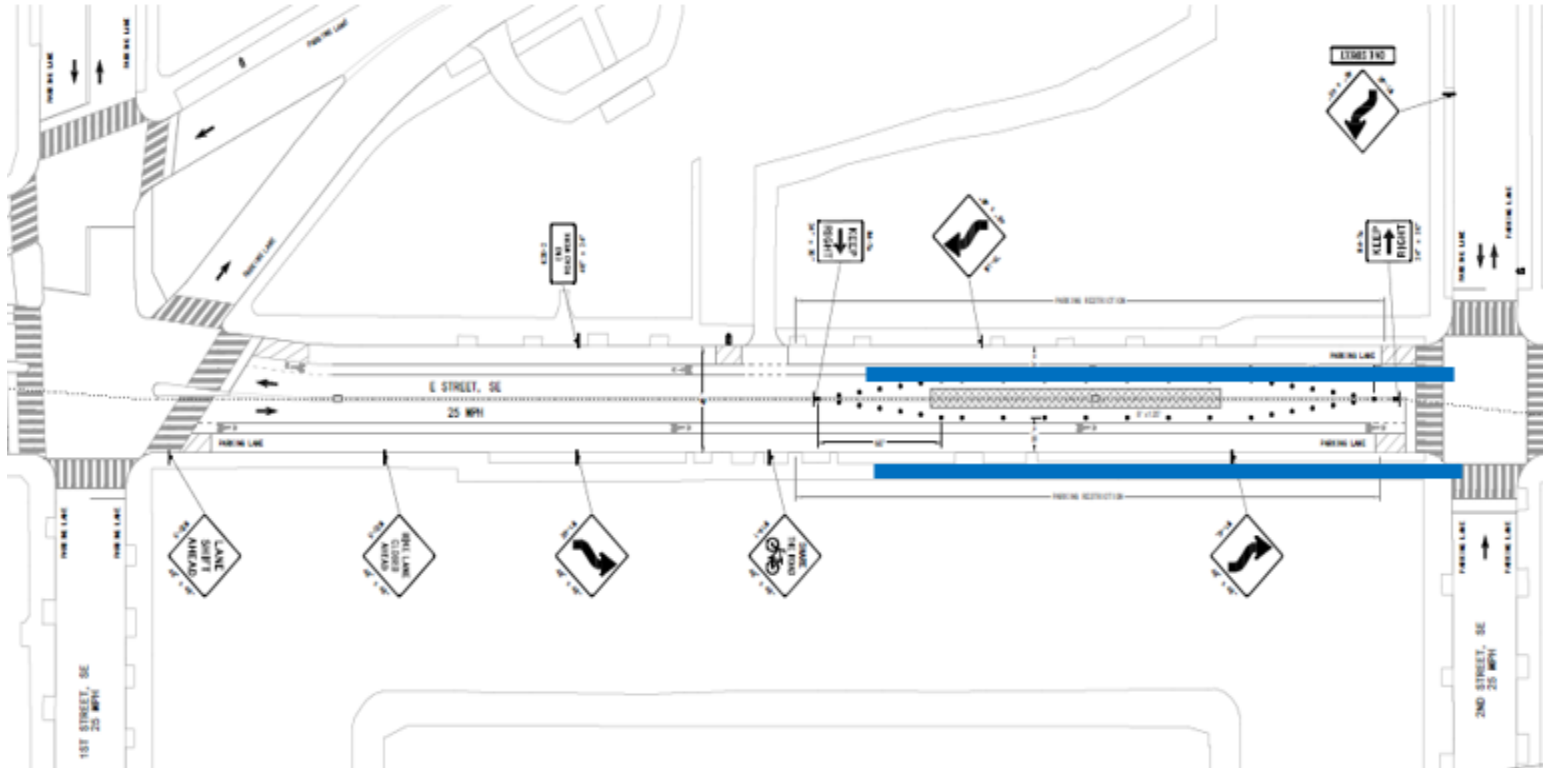
Overview of Discussion

- Electrical purpose of the projects occurring in your community
- Sequence of disruption as construction work occurs:
 - Excavation and conduit construction
 - Milling and Paving
 - Cable installation and splicing

Typical Construction



Typical Traffic Control Phase Map



No parking is allowed during the resurfacing along the blue line.

Southwest Waterfront – North LVAC Group

- Establish and extend a new LVAC Network Group (6 feeder) from the Southwest Waterfront (SWWF) Substation to the vicinity 7Th and G St, SE
- This new group will provide enough capacity to accommodate load growth in the capitol River front development area, the Yards, and Pennsylvania Ave SE corridor
- Building approximately 9000 feet of conduit and installing 18 manholes
- Conduit work timeline:

Spring 18 – Summer 18 (completed)

Summer 2018 – Winter 2018

Fall 2018 – Winter 2019



An Exelon Company

Conduit Construction Schedule – E St SE



Remaining Conduit:

1. Installing duct bank from 500 block of South Capitol St SW up to 30 E Street SE
2. Installing duct bank from 30 E Street SE up to 103 E Street SE
3. Permanent Paving from intersection of 2nd & E Street SE up to 500 block of South Capitol Street SW

Construction Timeline:

Construction Starts: October 2018
Construction Finish: November 2018

Construction Starts: September 2018
Construction Finish: December 2018

Paving Starts: September 2018
Paving Finish: December 2018



An Exelon Company

Conduit Construction Schedule – 7th St SE



Remaining Conduit:

1. Installing duct bank from intersection of E St & 7th St SE up to 523 7th Street SE
2. Installing duct bank from 523 7th St SE up to 648 G Street SE
3. Permanent Paving from intersection of 7th & E Street SE up to 648 G street SE

Construction Timeline:

Construction Starts: November 2018
Construction Finish: January 2019

Construction Starts: November 2018
Construction Finish: February 2019

Paving Starts: November 2018
Paving Finish: February 2019

Cable Installation Schedule

- Scheduled Cable Work:
- Installing cable from SW Waterfront Substation up to intersection of E Street SE & Pennsylvania Avenue SE
- Construction Time Line:
- (Estimated) Construction Start – July 2019
- (Estimated) Construction Finish – September 2019

Southwest Waterfront – West LVAC Group

- Upgrade cable sizes of the Buzzard point Station B West LVAC Network group feeders to increase firm capacity from the vicinity of 2nd and P St, SW to 4th and M St, SW
- Then transfer the feeders transferred from the Buzzard point substation to the new SW Waterfront Substation.
- Building approximately 3100 feet of conduit and installing five manholes
- Conduit work timeline:

Spring 2018 – Summer 2018 (completed)

Summer 2018 – Winter 2018



An Exelon Company

Capitol Hill Conversion Conduit Overview

Phase 3 and 4

- Feeder conversion work.
- Install new conduit, manholes, transformers, cable and other electrical equipment such as switches and tap-holes.
- We are currently evaluating alternative routes and feasibility outside of the E Street SE block for future work.
- **Phase 3** work will start at Pennsylvania Ave and progress southward
- **Phase 4** work will start at Pennsylvania Ave and progress northward

Benning Extension to Hill East Map & Overview

The Benning Extension to Hill East work is in support of the Capitol Hill Conversion Project:

- Extends new feeders to provide additional capacity from 4 kV to 13 kV
- Conduit construction complete except for box tunneling across Benning Rd at 19th St NE
- Cable work to follow in January – February 2019

Customer-Driven Projects

Customer-Driven Projects

- 1339 E Street SE – Site currently under construction, conduit work with estimated completion Fall 2018.
- 1309 E Street SE – Site just beginning construction, conduit work with estimated completion Fall 2018.
- 415 14th Street SE – Site just beginning construction, conduit work with estimated completion Fall 2018.
- 1220 Pennsylvania Avenue SE – Site currently under construction, conduit work with estimated completion Fall 2018.
- 1401 Pennsylvania Avenue SE – Site currently under construction, conduit work with estimated completion Winter 2018.

Questions